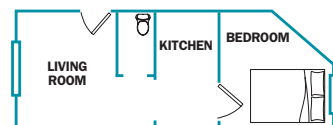


# Apartment tour 1BR in Hell's Kitchen

Theater pro Brady Schwind turns to the Victorian era and old-school plays for design inspiration. By **Sarah Bruning**



**1** When writer-director Brady Schwind moved to New York from California in 2010, he rented a roughly 600-square-foot pad in what he thought was an average former tenement. After he learned the building housed a brothel in the early 1900s, he decided to embrace its Victorian past. “I didn’t have a lot of money to furnish it, and someone mentioned the various flea markets,” he recalls. “I ended up buying almost 90 percent of

what you see from [those vendors], and I don’t think anything cost more than \$200.”

**2** This antique dresser was scored for a bargain at Angel Street Thrift Shop

(118 W 17th St between Sixth and Seventh Aves; 212-229-0546, [angelstreetthrift.org](http://angelstreetthrift.org)).

**3** On his bedside stand—another Angel Street Thrift Shop treasure—Schwind arranges an Ivanhoe brass key on top of three books. A lamp from the JCPenney catalog ([jcpenney.com](http://jcpenney.com)) and two vintage photographs of silent-film actors (Ramon Novarro and Maude Fealy) sit behind the stack.

**4** A condiment was Schwind’s secret weapon when it came to refurbishing this antique copper fire extinguisher. “It was completely corroded,” he recalls. “But I read online that you could restore the metal by rubbing ketchup on it, so I grabbed a bunch of packets from a nearby McDonald’s and cleaned it in the bathtub.”

**5** As an homage to his dramatic-arts background, Brady mounted seven turn-of-the-20th-century theater magazines on his living-room wall. “I like the idea of having little collections,” he says. “I got all of these for \$40 at the West 25th Street Market [W 25th St between Broadway and Sixth Ave; [hellskitchenfleamarket.com](http://hellskitchenfleamarket.com); Sat, Sun 9am–5pm].”

**6** “The first thing I knew I wanted was the red walls—partly because of the brothel and partly because I grew up in Dallas and you see a lot of [colorful] walls [there],” explains Schwind. To achieve the desired effect, he chose Ming Red, a special-order Sherwin-Williams shade. He fills the living room with an eclectic mix of furnishings, including a chandelier from the JCPenney catalog and an antique gold bench from the West 25th Street Market.

Other eye-catching accents, such as blue Chinese antique-replica vases from the Hell’s Kitchen Flea Market (W 39th St between Ninth and Tenth Aves; [hellskitchenfleamarket.com](http://hellskitchenfleamarket.com); Sat, Sun 9am–5pm) and a crimson oriental area rug from Macy’s (151 W 34th St at Seventh Ave; 212-695-4400, [macys.com](http://macys.com)), round out the room.

**7** An oddly shaped bedroom initially presented a challenge for Schwind, but he solved the problem by situating his bed at an angle, rather than flat against a wall. “It adds visual interest, and it makes the room look bigger,” he observes. Schwind covers his Sleepy’s bed frame with a vividly patterned Ralph Lauren duvet and matching square pillow from a Macy’s sale, while his red, 500-thread-count sheets were purchased from a street vendor.